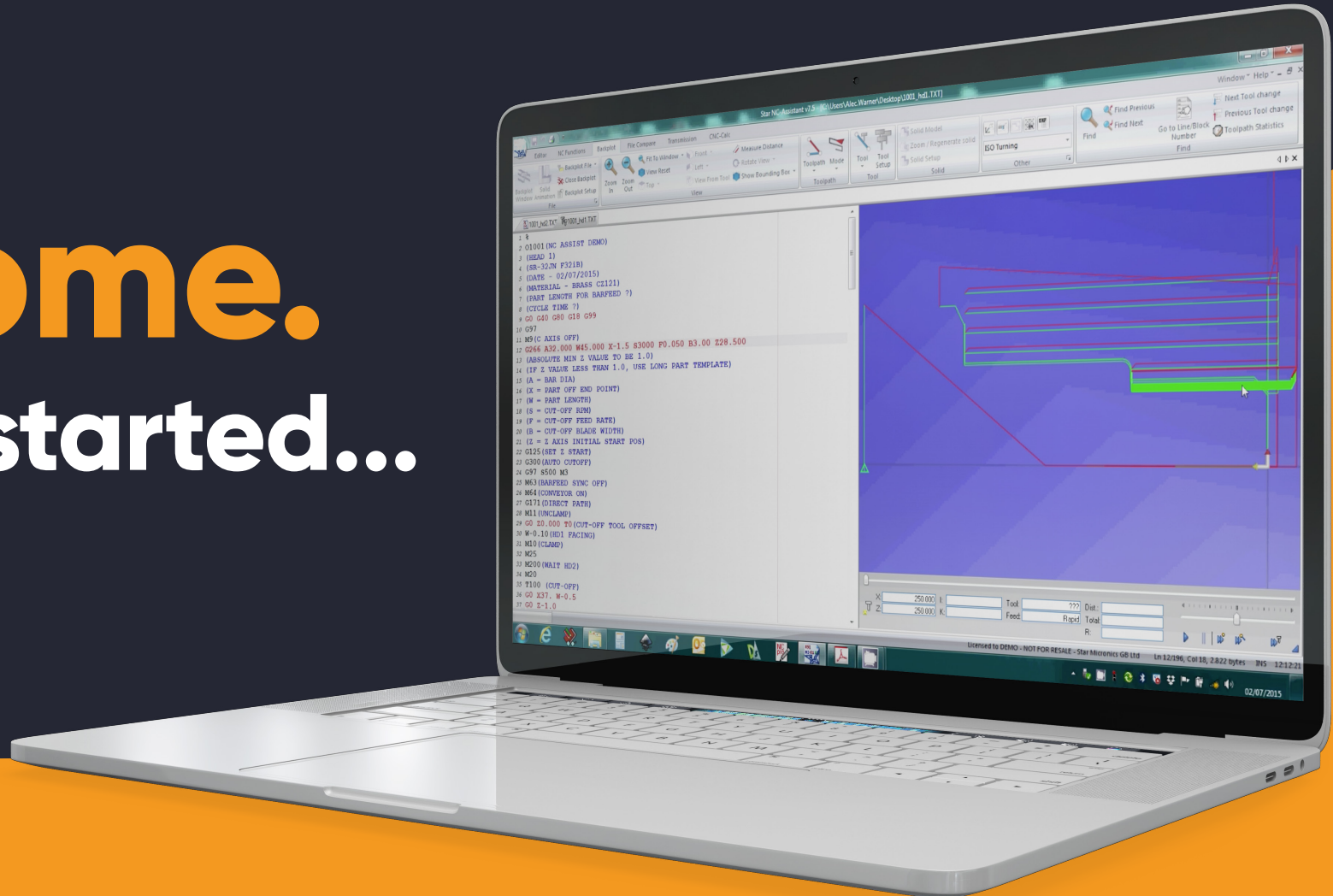
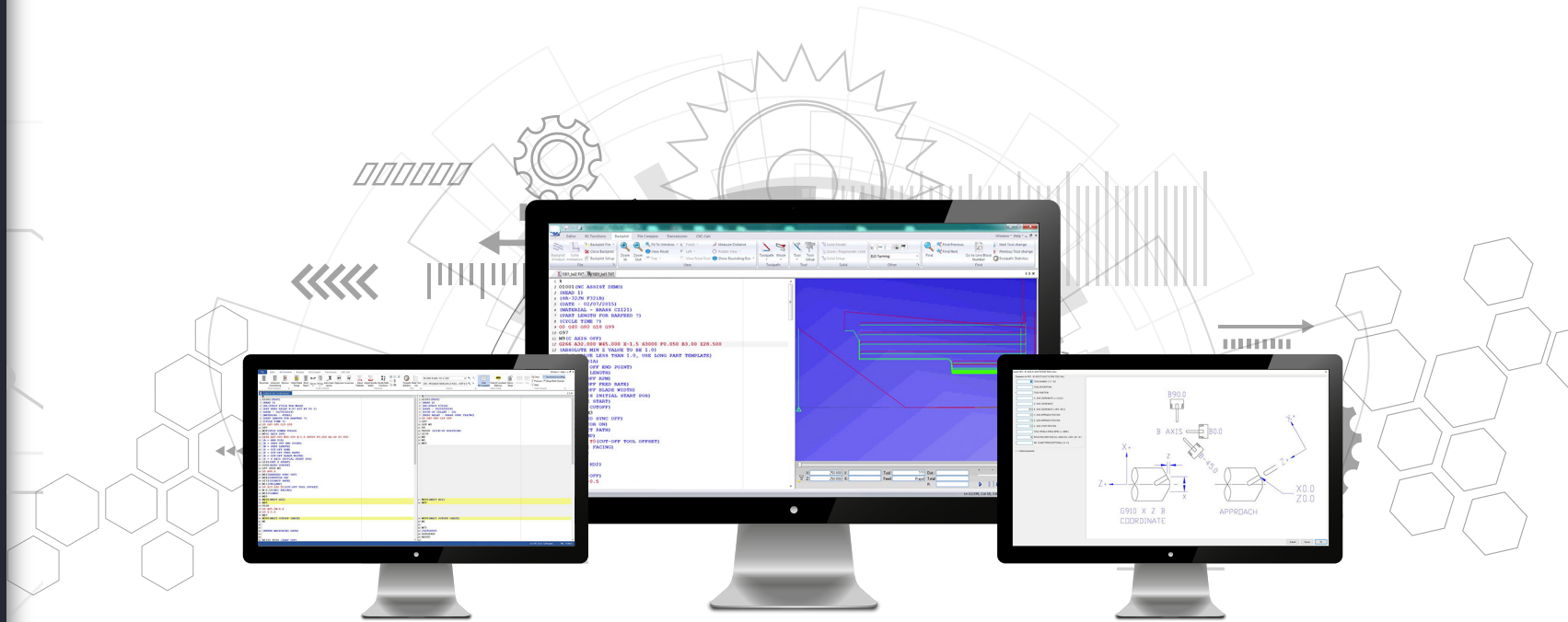


Welcome.

Let's get started...



Overview



Thank you for downloading NC Assist.

This document details how to download and install the Star NC Assist software onto a suitable Windows computer. This software is available to trial for 30 days, after which you will be required to purchase a licence file to continue using the software.

Please follow this guide carefully as incorrect installation could result in the software not functioning as expected. If you require assistance please contact us via engineering@stargb.com



CONTENTS

Contents

The NC Assist package contains...

MACROS & JPEG FILES [METRIC / INCH]

These files include the individual Star machine MAC files in metric and inches. The MAC files include all the NC code data automatically generated when using the conversational software. Once installed these files must not be deleted else the NC Assist software will not be able to generate the NC code.

Contact Star GB if the MAC file for your machine is not present as the MAC files are constantly being updated to include more functions. Star GB do not accept any liability for generating incorrect code.

Star_NC_Assistant_*****.exe

This file begins the install process for NC Assist. Your computer may notify you that .exe files could harm or change your computer, however this file is safe to use and is generated by Star GB.

NC Assist User Guide PDF

This document is the operating manual for NC Assist and gives in-depth instructions on the features and functions of the software.

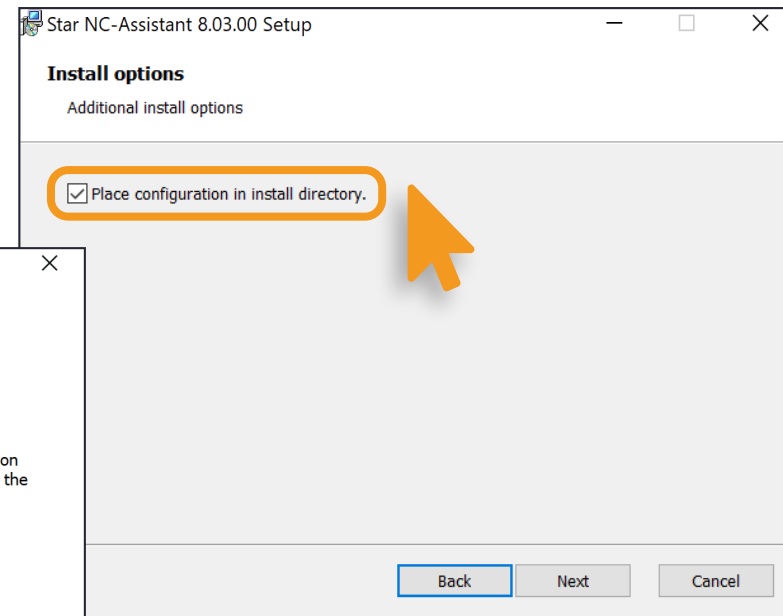
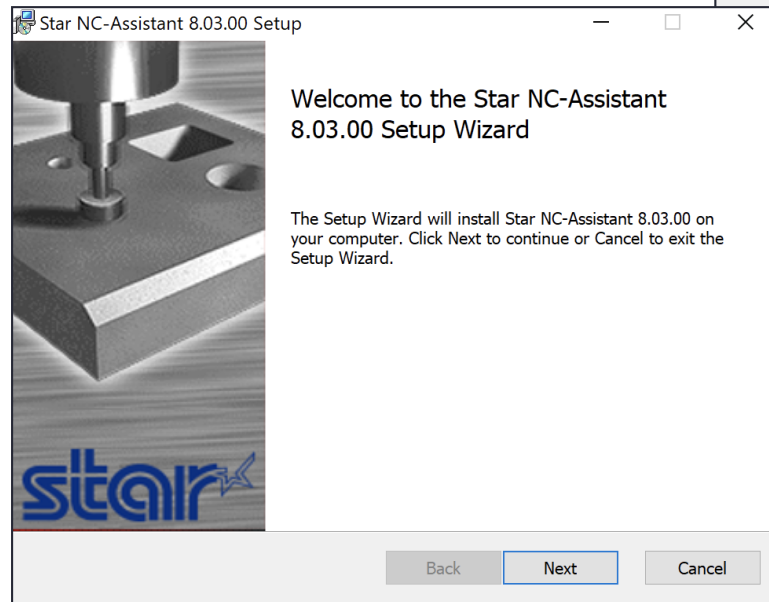
NC Assist Quick Guide PDF

This document contains general information about NC Assist including a brief demonstration of how to get started with the software.



STEP ONE

Step one



Please ensure that **place configuration in install directory** is checked. This will make all users of the computer run NC Assist with the same settings.

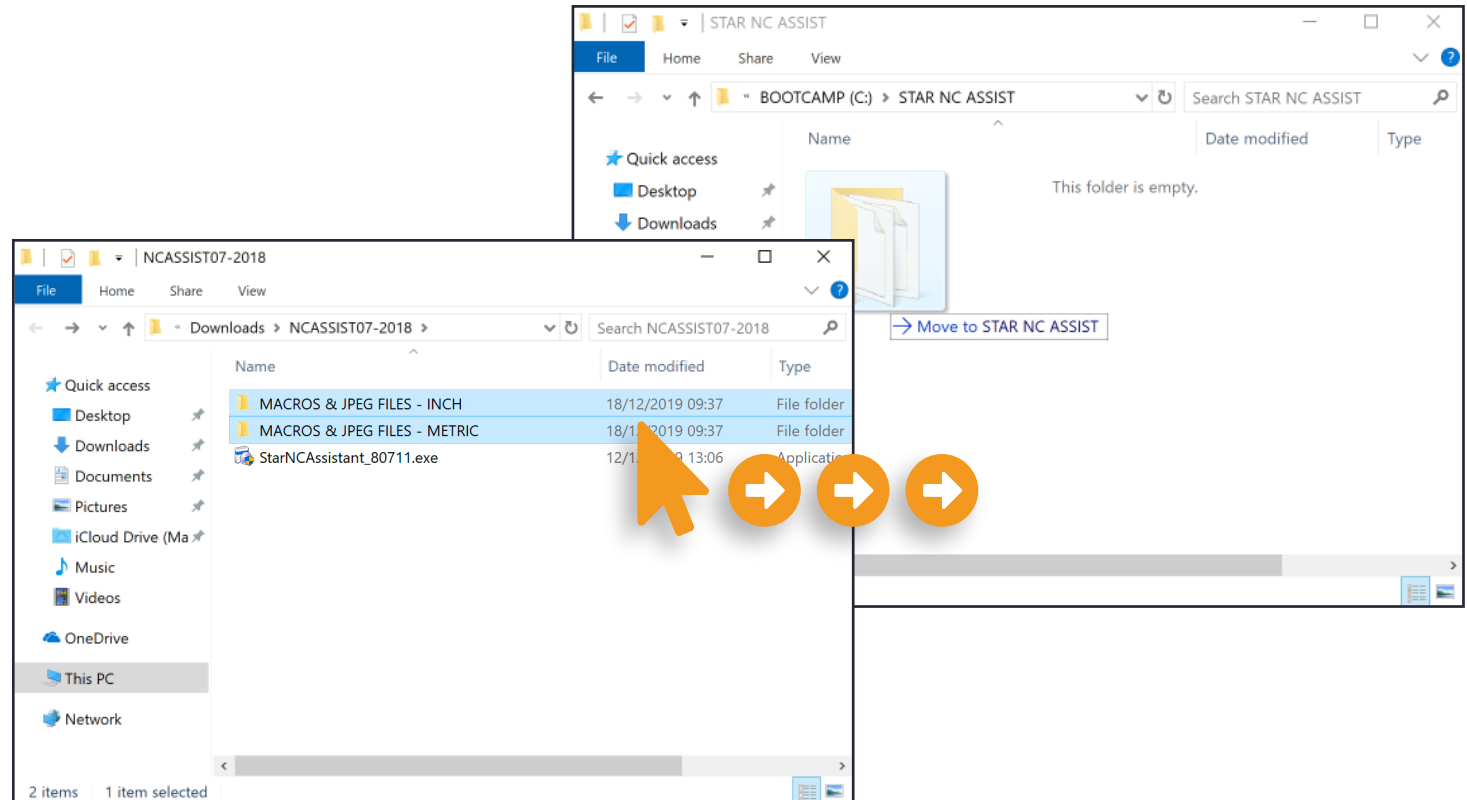
Installation wizard

Double click the `Star_NC_Assistant_*****.exe` file and the software installation wizard will be launched. This process will automatically install NC Assist onto the C: partition of the machine, e.g: **C:\Program Files (x86)\StarNCAssistant.**



STEP TWO

Step two



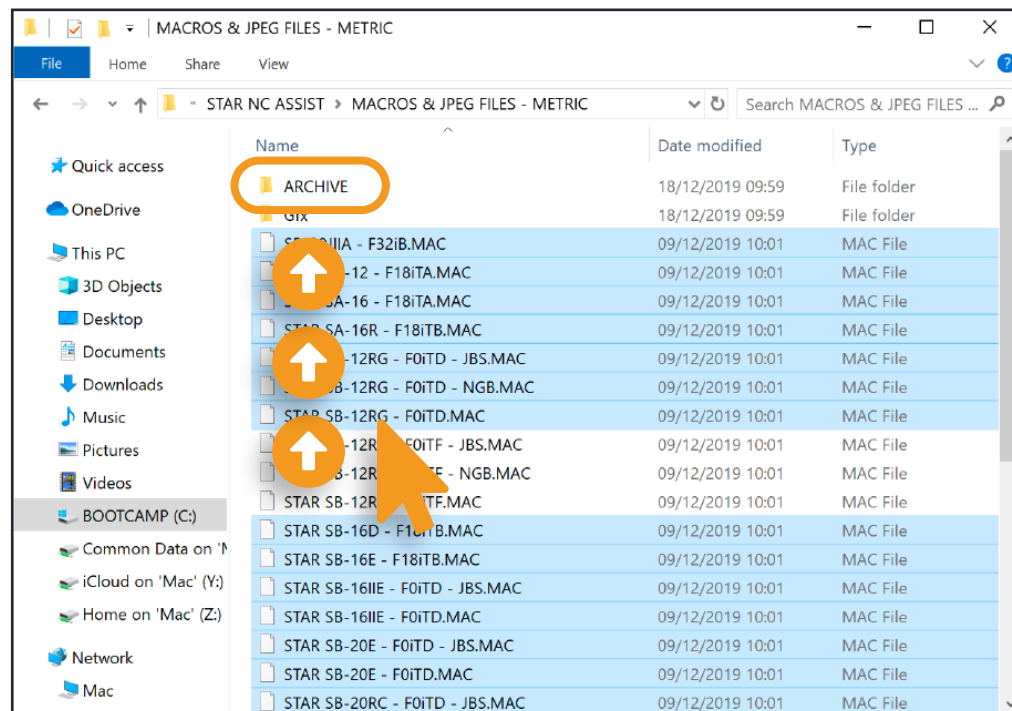
Folder preparation

Create a new folder named **STAR NC ASSIST** on the computer's C: partition and copy both of the MACROS & JPEG FILES directories to this location, e.g:
C:\STAR NC ASSIST\MACROS & JPEG FILES - [METRIC] AND [INCH]



STEP THREE

Step three



Archive unnecessary machines

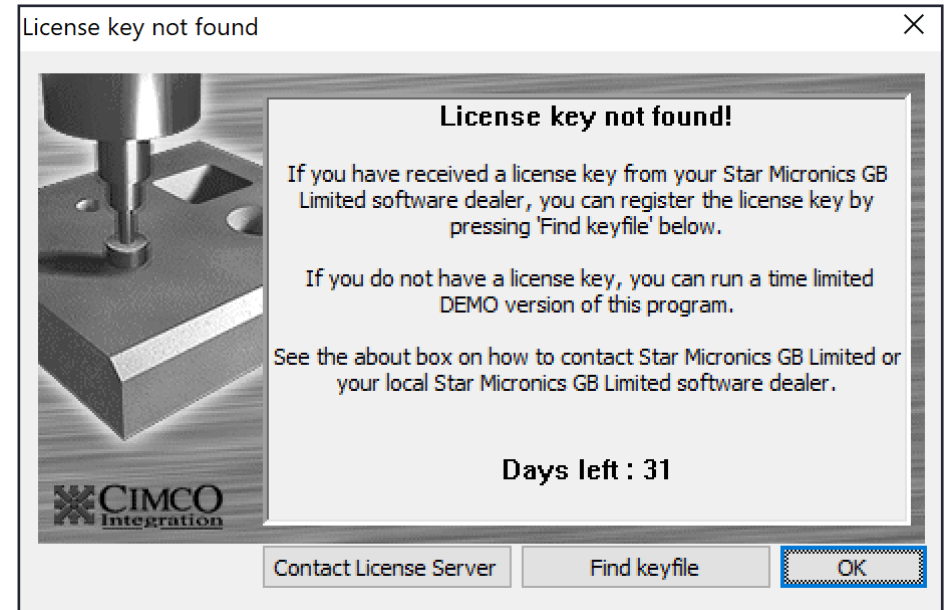
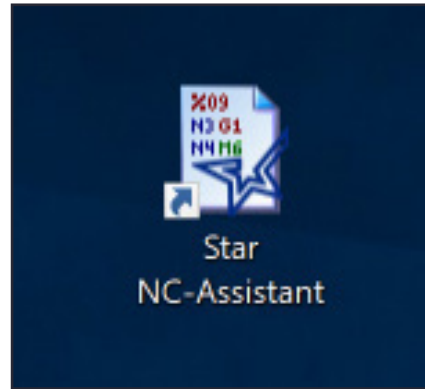
For optimal loading and saving speeds, open the **MACROS & JPEG FILES** directory that corresponds with the unit of measurement that will be used (METRIC or INCH) which has been copied onto the C: partition. Move any unnecessary machines into the **ARCHIVE** folder.

Archive only machines which are not required in the unit of measurement that will be used. For example, if only metric is required and only SB-12RG F0iTF will be used in NC Assist, move all other machines within the METRIC directory into the archive.



STEP FOUR

Step four



Launch NC Assist

You have now successfully installed NC Assist and the software can be launched from the icon created on the desktop ready for the set-up process. A pop-up window will advise that the trial will now begin.

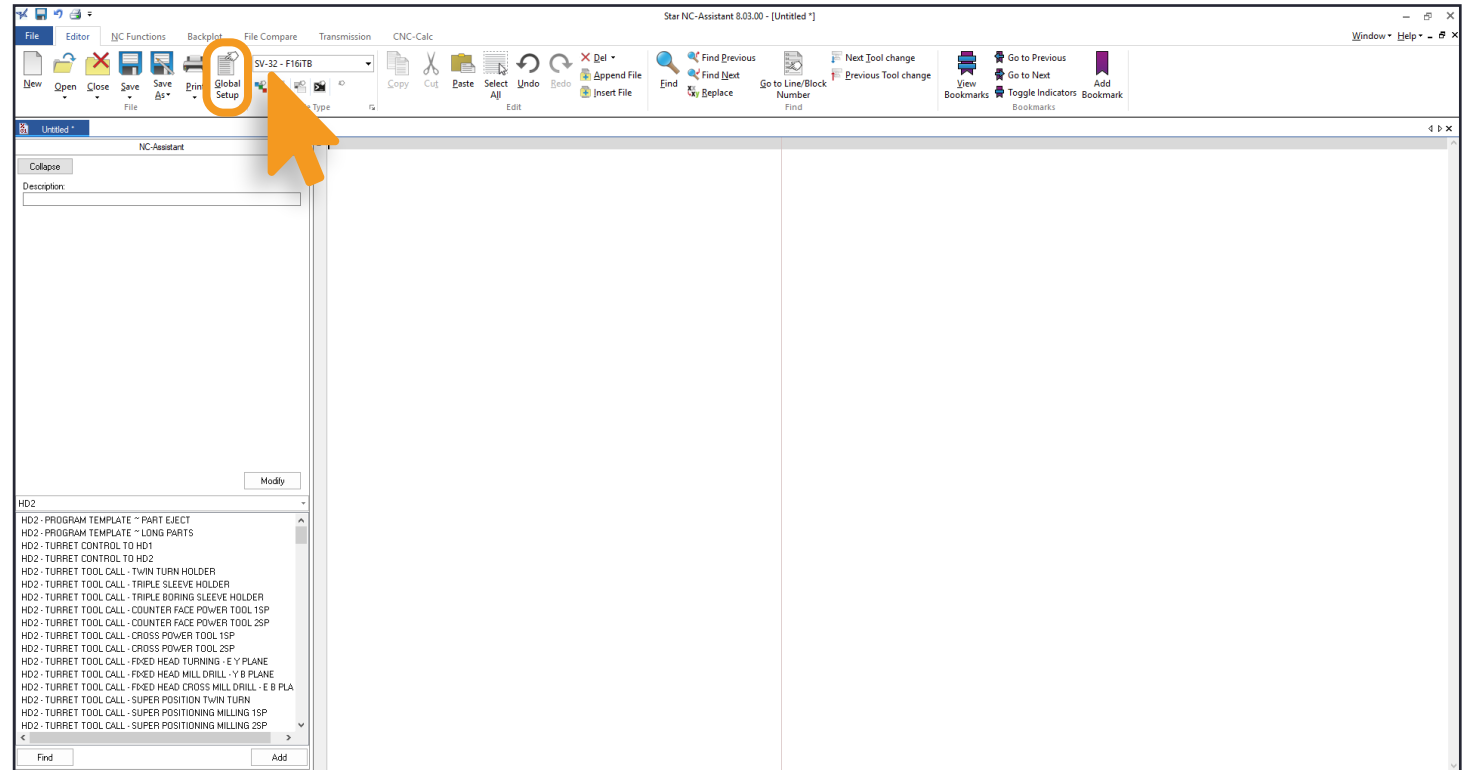
Please continue to step 5 to complete the set-up process.

The software must be configured to point to the location of the MACROS & JPEG FILES folder saved in step 2 for the unit of measurement that will be used. The software will not display the Star machines (MAC files) until this path is altered.



STEP FIVE

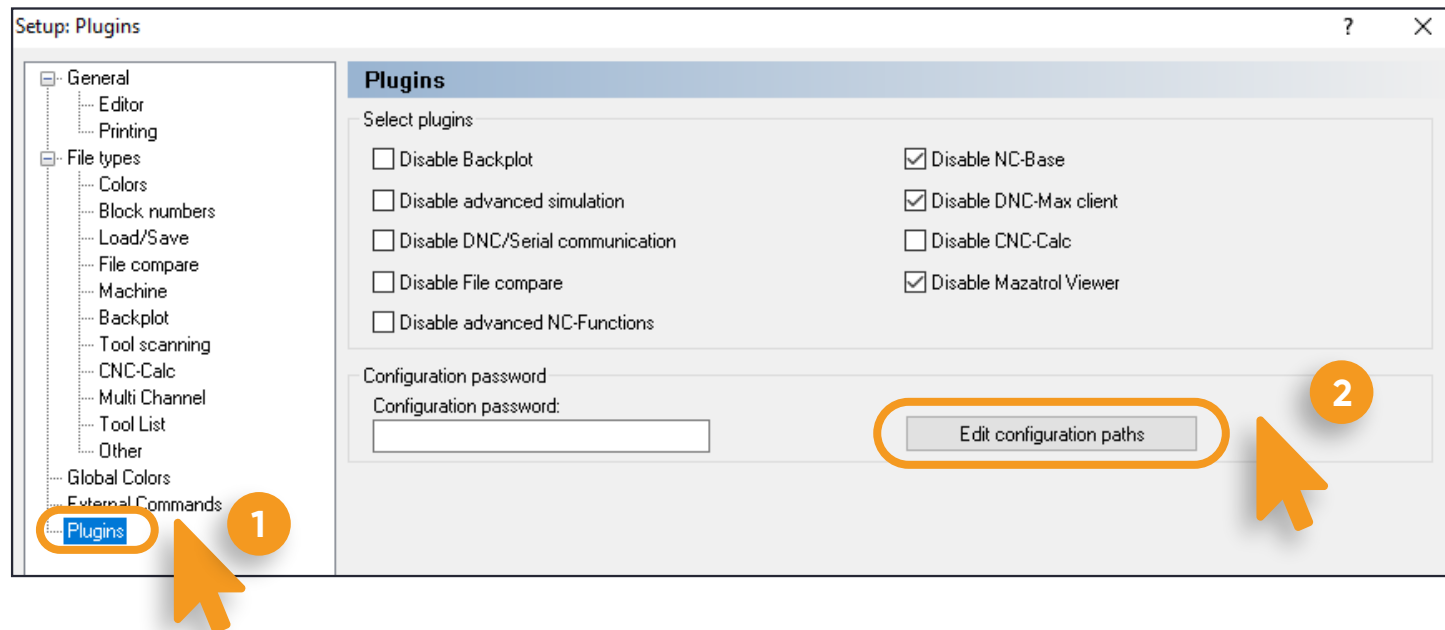
Step five



Beginning the setup process

At the welcome screen of NC Assist, select the 'Editor' tab in the horizontal top ribbon followed by the 'Global Setup' icon in the initial row of function buttons.

Step six



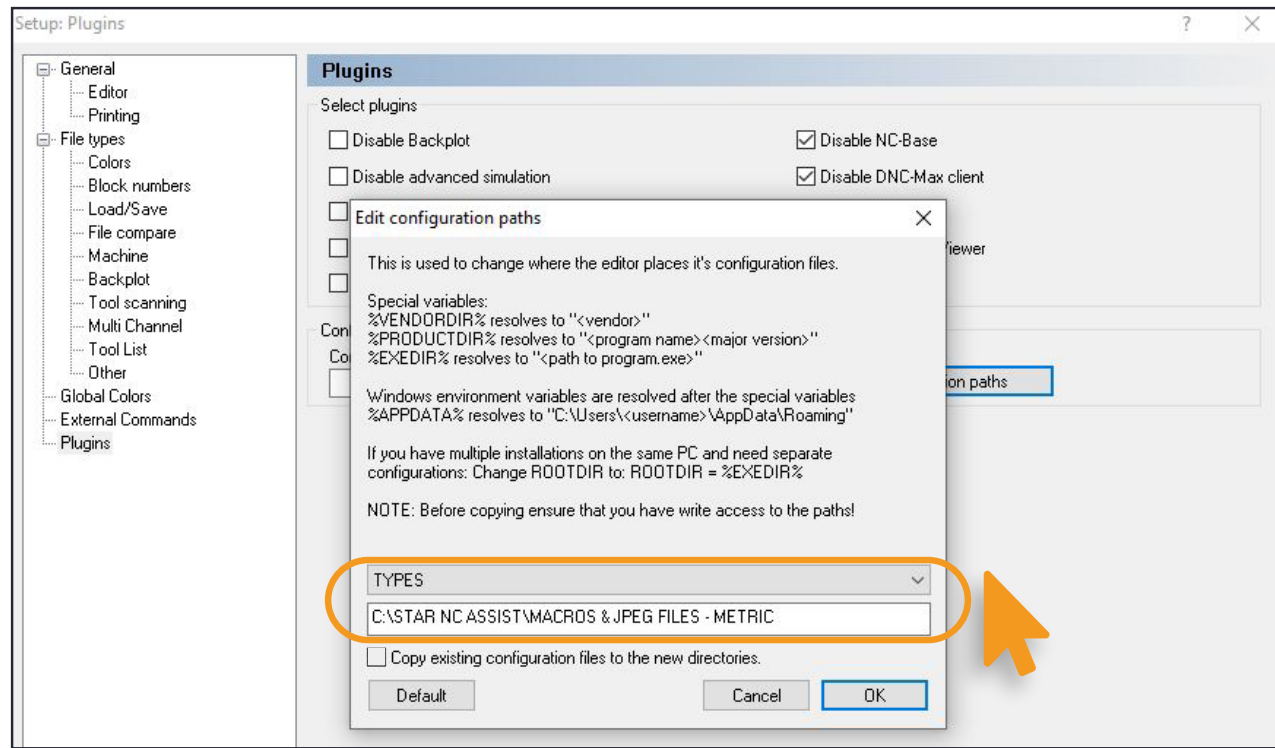
Accessing plugin setup

In the pop-up window, select 'Plugins' from the left navigation pane followed by 'Edit Configuration Paths' in the plugins settings area.



FINAL STEP

Final step



Edit configuration paths

In the pop-up window, change the drop-down menu from 'CFG' to '**TYPES**'. The path input box below should point to the location of the MACROS & JPEG FILES folder saved in step 2 for the unit of measurement that will be used in NC Assist.

METRIC – C:\STAR NC ASSIST\MACROS & JPEG FILES – METRIC

INCHES – C:\STAR NC ASSIST\MACROS & JPEG FILES – INCH

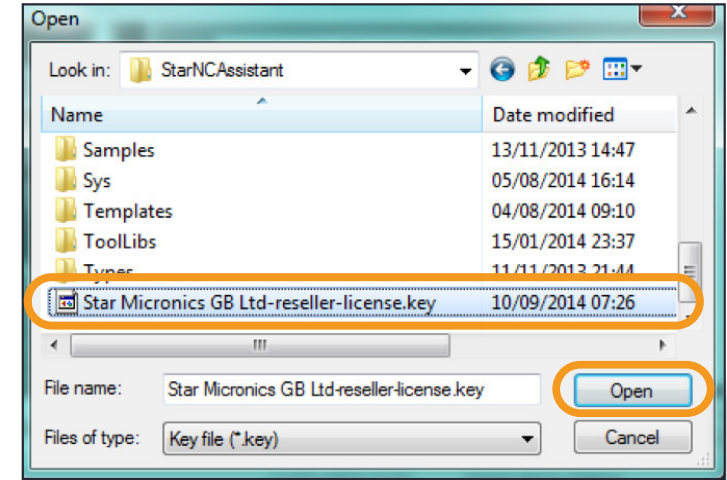
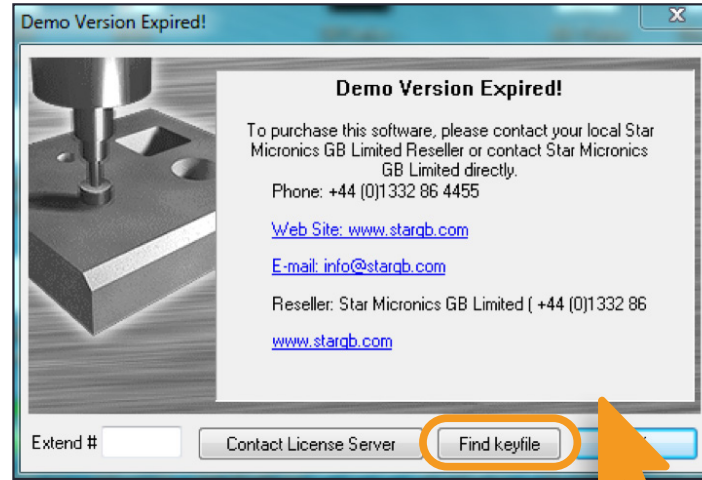
If NC Assist is being installed on this machine for the first time, untick the box labelled 'Copy existing configuration files to the new directories'. If NC Assist is being updated and existing macros are to be retained, the box should be ticked.

Press 'OK' and the set-up is now complete.



FULL KEY

Full key



Installing a full licence key

After the trial period of NC Assist, the software will expire and a full license will be required. To purchase a license key, please contact us using the details on the following page.

When a license has been purchased, place the keyfile in the NC Assist installation destination e.g. C:\Program Files (x86)\StarNCAssistant and locate it in NC Assist using the 'Find keyfile' button.

Help



UK & Eire

For assistance installing and using NC Assist within the UK & Eire, the team at Star GB are here to help via engineering@stargb.com. For licencing enquiries, please contact us via spares@stargb.com. To speak to an engineer, you may also call 01332 864455.

USA

For assistance installing, using or purchasing NC Assist within the USA, the team at Star CNC are available to help. Please visit www.starcnc.com/support to find contact details within your region.

Rest of World

Support for NC Assist is currently expanding to other Star Micronics locations around the world. At present, for assistance installing, using or purchasing NC Assist outside of the UK & USA, please contact engineering@stargb.com.